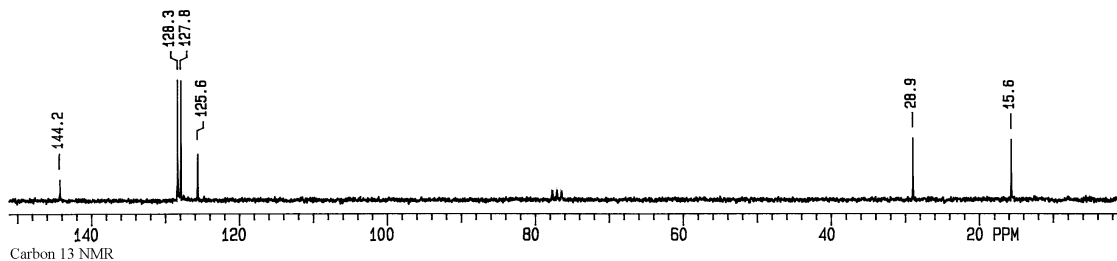
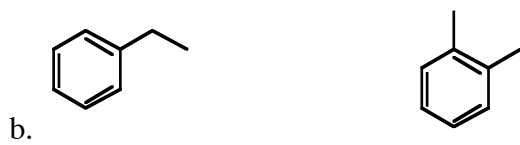
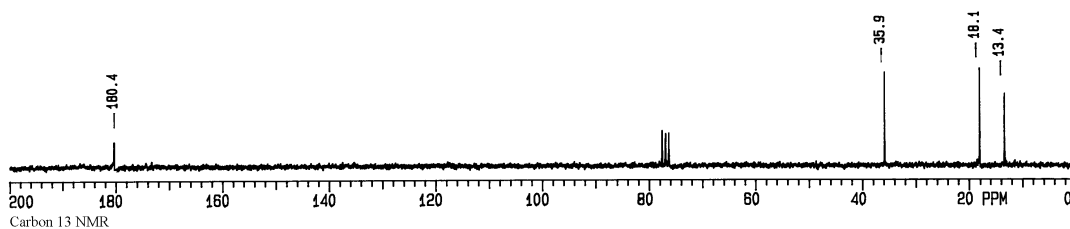
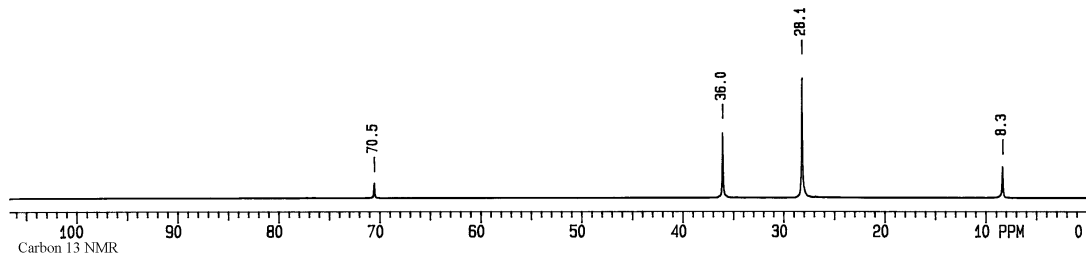
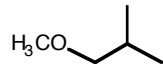
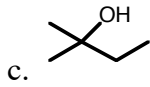


Chem. 218 Problem Set 1

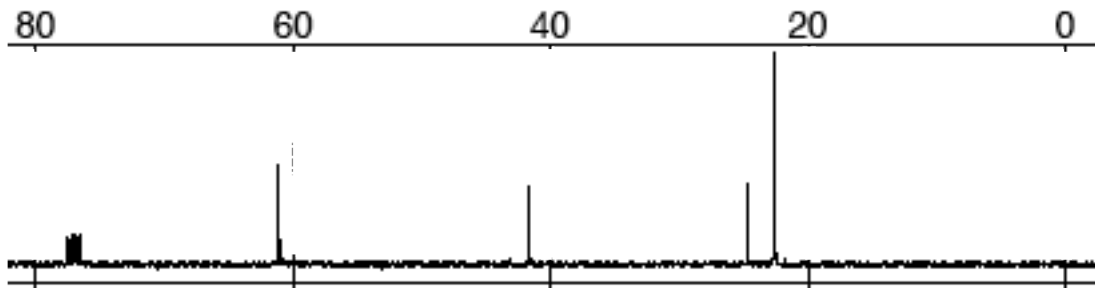
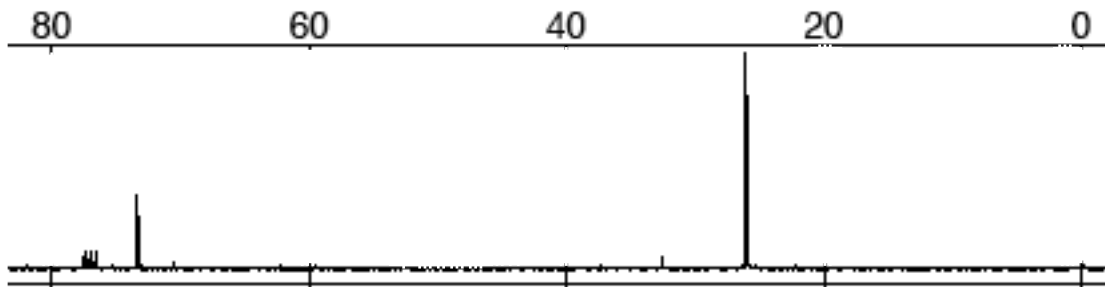
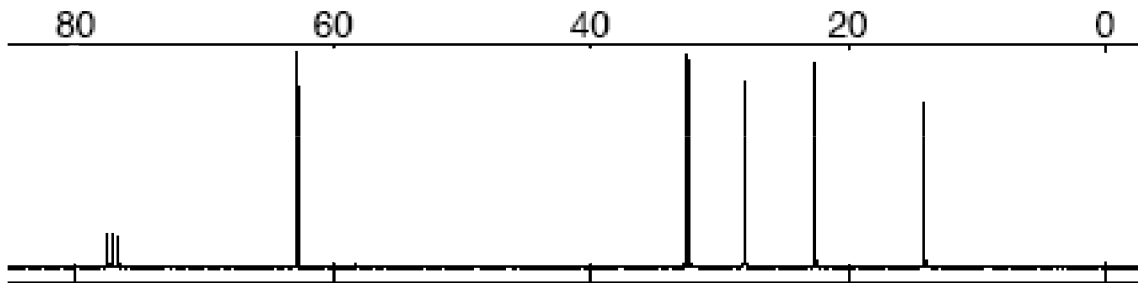
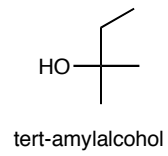
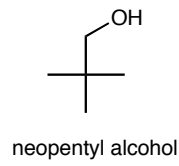
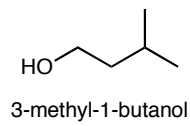
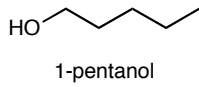
Recommended Problems from the text: 12.2, 12.5, 12.6, 12.10-12.14, 12.32, 12.34, 12.36, 14.28-15.32, 14.55-14.59, 14.63

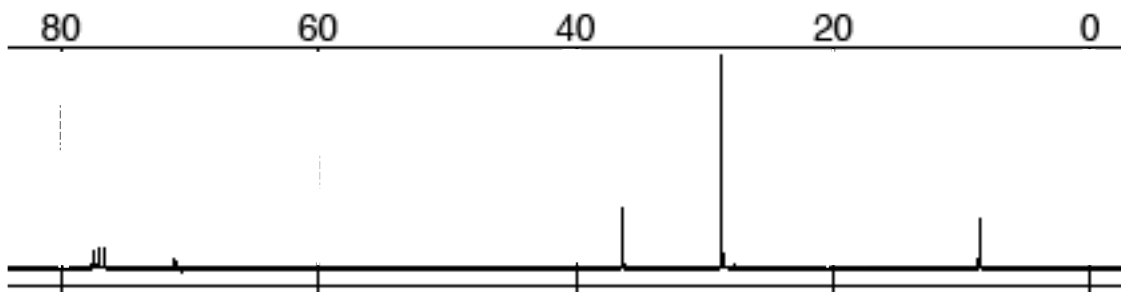
1. For each of the following, two constitutional isomers are given. Determine which one corresponds to the ^{13}C spectrum given. (A list of ^{13}C chemical shifts is on page 410).





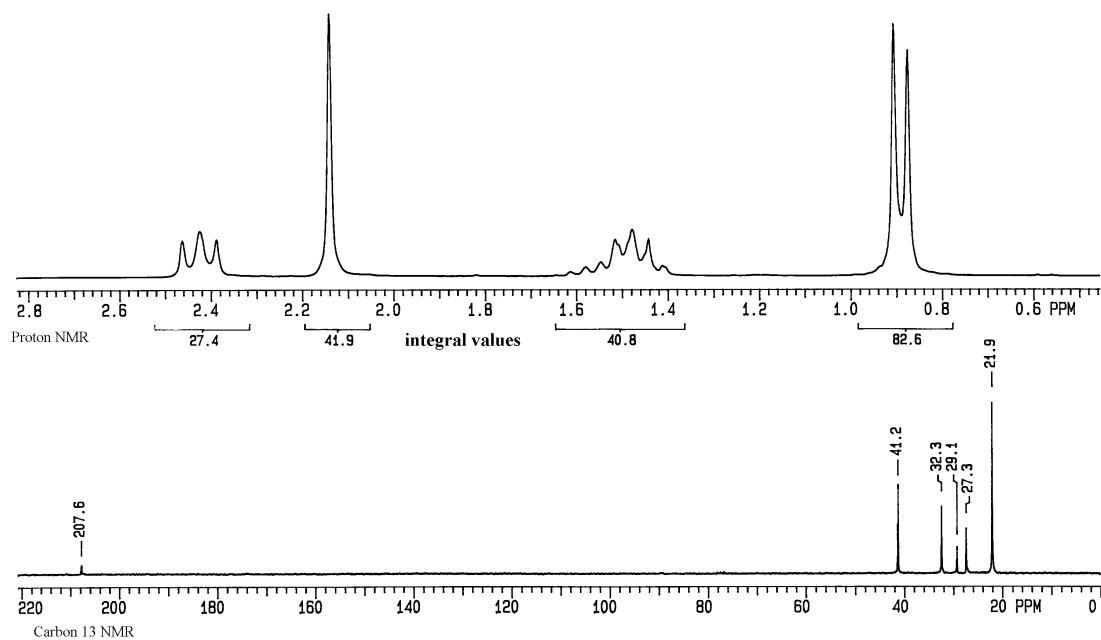
2. Match the correct structure with the spectrum.





3. Determine the structure of the following compounds

(a) $C_7H_{14}O$



(b) $C_{11}H_{14}O_2$

