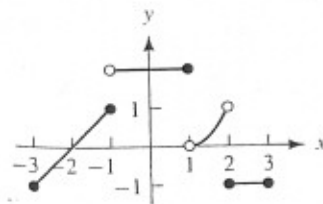


NAME: _____

YOUR GRADE IS BASED ON THE PROCESS AS WELL AS THE FINAL RESULT. SHOW ALL YOUR STEPS CLEARLY SO YOU WILL BE ELIGIBLE FOR THE MOST PARTIAL CREDIT. YOU MAY USE A CALCULATOR, BUT NO NOTES, BOOKS, OR OTHER STUDENTS. GOOD LUCK!

1.) (6 pts.) Use the given graph of f to evaluate the limits below.

a.) (2 pts.) $\lim_{x \rightarrow -1^-} f(x)$;



b.) (2 pts.) $\lim_{x \rightarrow -1^+} f(x)$;

c.) (2 pts.) $\lim_{x \rightarrow -1} f(x)$.

2.) (4 pts.) Suppose that F is an antiderivative of $f(x) = x \sin x$. Find $F'(x)$.